



## 2014-2015 ANNUAL REPORT

Canadian Rural Revitalization Foundation  
Fondation canadienne pour la revitalisation rurale







[www.crrf.ca](http://www.crrf.ca)





# about the foundation

The Canadian Rural Revitalization Foundation/Fondation canadienne pour la revitalisation rurale (CRRF/FCRR) was established in 1989 to contribute to the revitalization and sustainability of rural Canada through collaborative research for rural leaders in the community, private sector, and in all levels of government.

CRRF/FCRR works to create credible insights and to improve our understanding of issues and opportunities that are of common interest to rural residents across Canada. Knowledge and better understanding are the fundamental pillars for the welfare of rural communities and environments.

CRRF/FCRR is an organization comprised of members from across Canada, with diverse international links, representing rural leaders, rural organizations, development practitioners, government policy makers, researchers, students, and other stakeholders interested in the future of rural Canada. The Foundation explores a diversity of issues, including rural health and social provision, local and regional economic development, local government and community governance, education, organization development, environmental management and stewardship, and many others facets of life and livelihood in rural Canada. Each year CRRF/FCRR co-hosts a national confer-

ence to share lessons learned, research findings, and discuss key rural issues. In addition to the national conference, CRRF hosts and participates in workshops, forums, and symposia to advance rural issues in Canada.

Originally known as the Agricultural and Rural Restructuring Group (ARRG), CRRF/FCRR is a national nonprofit society chartered in the Province of Alberta (#50509014) and a federally registered charity (#0990655-59).

## Core Values

CRRF/FCRR carries out its mission without favour or prejudice by political interest.

CRRF/FCRR respects and serves inclusively the interests of all segments of rural society, within communities, between metro-adjacent and remote places, and across the forestry, fishing, mining, agriculture, energy, manufacturing and services sectors.

CRRF/FCRR is open, transparent and accountable.

CRRF/FCRR seeks to broaden the common ground between rural and urban Canadians.

# president's message

It is my sincere pleasure to present the 2014-2015 annual report of the Canadian Rural Revitalization Foundation/Fondation canadienne pour la revitalisation rurale (CRRF/FCRR). Over the course of the last year the Foundation has been engaged in leading, supporting and collaborating on rural research, working with our stakeholders to ensure they receive the benefits of ongoing research through knowledge mobilization and transfer, and revisiting our strategic directions through discussing and formulating a new five year strategic plan.

A hallmark event in the last year for the Foundation, and one I am very excited about personally, is the release of the report State of Rural Canada: Rural Challenges and Opportunities. Through the efforts of 33 volunteer authors we were able to create this report in the hopes of highlighting rural issues in the upcoming federal election. This is, from my perspective, an outstanding CRRF/FCRR accomplishment. However, I would be remiss if I did not acknowledge the efforts of the editorial team: Sarah-Patricia Breen, Sean Markey, Laura Ryser, Ryan Gibson, and Ruth Mealy and their willingness to "herd cats". The willingness of the editorial team and the authors to take this project on in what are already busy professional lives embodies the spirit of CRRF/FCRR and its culture of volunteerism, dedication and commitment to rural and remote Canada.

As noted above, one of the major objectives of this year was working on the development of a new strategic plan for CRRF/FCRR. This was a large undertaking and we benefited through the willingness of Joy Dornian who volunteered to bring her experience to facilitate this process. It is through the skill and good grace of Joy that we managed to negotiate the challenges of developing a vision for the next five years.

Finally, we have this year's conference, a conference that will be challenged to meet the success of last year's conference New Realities, New Relationships that

took place in Prince George, BC. Last year's conference saw 172 delegates gather and participate in 25 workshops/presentations and five plenary key note speakers. It was truly a remarkable event that demonstrated the benefits of forging new partnerships. While the challenges are great for the planning committee for this year's conference to repeat the success of last year, I am confident that it will meet with equal and perhaps greater success. It has been CRRF/FCRR's pleasure to partner with the Centre for Island Studies and with the North Atlantic Forum in bringing this year's conference to Summerside, PEI.

In closing, I would also like to express my gratitude to all those people who make CRRF/FCRR possible, the volunteers who make up the membership and the board who give of their time and efforts to move forward the agenda of rural and remote Canada. It is through their hard work that we are able to accomplish everything that we do, making rural and remote Canada a better place. I would also like offer my personal thanks to the outgoing board members. As we all know, board renewal is an important part of any organization but that does not mean it is easy to say good bye to trusted colleagues. I have been privileged to have worked with three dedicated colleagues who will be stepping away from the board this year: Laura Ryser, Lars Hallstrom and Chris Southcott. And while they are stepping down from the board I know that we will always be able to call on them for assistance when needed. We wish you the best of luck in whatever your next adventure may be.

I look forward to both a challenging and rewarding year as we embark on our continuing journey of making rural and remote Canada a vibrant place for investing in and living out meaningful lives.

Sincerely,

Al Lauzon

# board of directors



**Al Lauzon**  
President  
Guelph, Ontario



**Lars Hallstrom**  
Camrose, Alberta



**Heather Hall**  
Secretary  
Saskatoon, Saskatchewan



**Terri MacDonald**  
Castlegar, British Columbia



**Sean Markey**  
Treasurer  
Vancouver, British Columbia



**Ruth Mealy**  
Minto, Manitoba



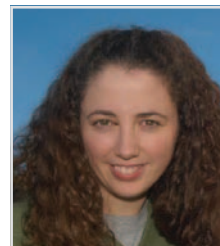
**Ryan Gibson**  
Past President  
Halifax, Nova Scotia



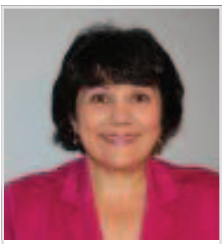
**Chris Southcott**  
Thunder Bay, Ontario



**Sarah-Patricia Breen**  
Vancouver, British Columbia



**Laura Ryser**  
Prince George, British Columbia



**Ramona Cameletti**  
Guelph, Ontario

# accountability and governance

## bylaws

CRRF/FCRR adopted the current bylaws at the 2014 Annual General Meeting in Prince George, British Columbia. The Foundation is governed by an elected board of directors, each elected for a two-year term at the Annual General Meeting. A copy of the current bylaws can be found at [www.crrf.ca/wp-content/uploads/2015/01/CRRF-Bylaws-2014.pdf](http://www.crrf.ca/wp-content/uploads/2015/01/CRRF-Bylaws-2014.pdf).

## board meeting minutes

The minutes from each CRRF/FCRR board meeting are posted to our website shortly after being approved by the board. Copies of the board minutes, starting from January 2010, can be found at [www.crrf.ca/board-meeting-minutes](http://www.crrf.ca/board-meeting-minutes).

## audited financial statements

Each year CRRF/FCRR submits the financial books, accounts, and records of the Secretary and Treasurer to an independent auditor. The most recent audit was conducted by Harris Ryan Chartered Accounts, based in St John's, Newfoundland. A copy of our audited financial statements is available on our website at [www.crrf.ca/agm/](http://www.crrf.ca/agm/).

## annual general meeting documents

The agendas and minutes from previous Annual General Meetings are posted to the CRRF/FCRR website at [www.crrf.ca/agm](http://www.crrf.ca/agm). The Foundation circulates information about upcoming AGMs at least 20 days in advance of the meeting, in accordance to our bylaws. Information is circulated to members via our e-newsletters,

## charity compliance

As a federally registered charity CRRF/FCRR annually submits the T3010 form to the Canadian Revenue Agency. Evidence of these annual submissions can be found at [www.cra-arc.gc.ca/chrts-gvng/lstngs/menu-eng.html](http://www.cra-arc.gc.ca/chrts-gvng/lstngs/menu-eng.html).

# research activities

Over the past year, CRRF/FCRR has been actively involved in a number of research initiatives of interest to rural audiences. Three of these research initiatives are illustrated below.

## Canadian Regional Development: A Critical Review of Theory, Practice and Potentials

*Lead: Kelly Vodden (Grenfell Campus, Memorial University)*

This multi-year project is investigating how Canadian regional development has evolved over the past two decades and the degree to which Canadian regional development systems have incorporated New Regionalism into their policy and practice. This initiative is working with five regions: Eastern Ontario, Kittiwake (Newfoundland), Kootenay (BC), Rimouski-Neigette (Québec), and the Northern Peninsula (Newfoundland). For further information visit <http://cdnregdev.ruralresilience.ca>.

## Rural Policy Learning Commons

*Lead: Bill Reimer (Brandon University)*

The Rural Policy Learning Commons is a 7-year Partnership project established in 2014 to enhance Canadian prosperity by: (i) identifying and analyzing policy options relevant to rural and northern places, (ii) evaluating these options in the context of national and international policy innovations, and (iii) building leadership capacity among rural and northern researchers, policy-makers, and practitioners. Further information on the Rural Policy Learning Commons can be found at <http://rplc-capr.ca>.

## The Influence of Lines and Boundaries on Collaboration

*Lead: Ryan Gibson (Saint Mary's University)*

Regions are becoming increasingly important for planning, sustainability, and social development. Throughout Canada, multi-community strategies are being employed to issues far ranging, such as to address economic development opportunities to the formation of hockey teams. What happens when a provincial boundary cuts across the region? What are the implications of this 'line' on regional cooperation and collaboration?

## Pathways to Prosperity

*Lead: Victoria Esses (University of Western Ontario)*

This national initiative focuses on fostering welcoming communities that promote economic, social, and civic integration of immigrants and minorities in Canada. Using academic scholarship and community expertise the research initiative is conducting primary research across the country. This initiative engages researchers from over 50 universities, all levels of government, and local/regional actors. For further information visit <http://p2pcanada.ca>.



# supporting research initiatives

In addition to being engaged in research CRRF/FCRR is an active participant in a number of research proposals currently being adjudicated. Funding decisions regarding each proposal is anticipated in 2015/2016.

## Human Development in the Provincial North

CRRF/FCRR is a collaborator on a research proposal to the Social Sciences and Humanities Research Council of Canada (SSHRC) led by Ken Coates at the International Centre for Northern Governance and Development, University of Saskatchewan. The proposed four-year project will construct an assessment framework for understanding development in the northern region of Saskatchewan.

## Place, Periphery, and Philanthropy

CRRF/FCRR is also a collaborator on a research proposal to SSHRC led by Ryan Gibson at Saint Mary's University to examine the intersection of philanthropy and regional development in rural and northern communities throughout Canada. The proposal has been submitted to the Social Sciences and Humanities Research Council of Canada.







# new relationships, new realities

The Community Development Institute (CDI) at UNBC co-hosted the annual Canadian Rural Revitalization (CRRF/FCRR) Foundation conference in Prince George, BC. Rural and industry leaders, community and economic development practitioners, government policy-makers, researchers, and students gathered at the conference to discuss issues at the heart of rural and resource sector development in BC and Canada. The 2014 CRRF/FCRR conference theme, New Relationships, New Realities, reflected the changing relationships across industry, local and senior levels of government, and community organizations. Changes in policy and service environments, as well as changes in funding support, have reshaped expectations and operations while producing new realities for stakeholders in small communities. These changes call for new capacities and understandings.

The 2014 conference provided opportunities to explore how new labour arrangements, development opportunities, and policies are reshaping community and economic development practices. In addition to sharing lessons and best practices, there were opportunities to build new skills and tools in order to strengthen the capacity of rural practitioners, researchers, and other stakeholders.

The 172 participants enjoyed two days of plenary sessions and workshops featuring national experts in rural and resource sector development, along with local and regional presenters. In addition, they had a unique opportunity to embark on local and regional tours exploring the innovative ways that rural BC is adapting to a changing reality.

One unique feature of this conference was that the conference planning committee entered into a relationship with the Planning Institute of BC whereby planners could participate in the CRRF/FCRR conference and receive continuing education credits for doing so. This, I believe, was a first for CRRF/FCRR. All-in-all this conference was a success on any indicator one might use to judge the success of a conference. In the words of one participant, "The content of the sessions and workshops was fabulous. As people living in rural communities often wears many hats whether in their work or as part of their volunteer responsibilities, so much of what was offered was applicable."

A scenic landscape photograph showing a river flowing through a forested valley. The river has white water rapids and is surrounded by dense green trees. In the background, there are rolling hills or mountains under a cloudy sky. The image is used as a background for the left side of the page.

# towards regional collaboration workshop

The Towards Regional Collaboration Workshop took place on October 14-16 2014 in Blanc Sablon (Québec) and L'Anse-au-Clair (Newfoundland and Labrador). The objective of this 2-day workshop was to learn from other jurisdictions on cross-boundary collaboration challenges, opportunities, and lessons learned; to assess and identify the local and regional contexts and priorities; and finally to explore and identify potential strategies and actors for moving forward with collaboration in the "Strait of Belle Isle" region. This was also the opportunity to build and enhance networks among various stakeholders.

Before identifying priorities of regional collaboration, a number of presentations were given by experts from various perspectives in order to initiate discussions among attendees. Topics discussed touched on regional collaboration and its challenges, the trends and the future of rural communities, presentations of local situations from the Québec Lower North Shore and from the Labrador Straits regions.

This initiative was led by a steering committee composed of various economic and regional development experts such as the Leslie Harris Centre for Regional Policy and Development of Memorial University of Newfoundland, the Réseau de développement économique et d'employabilité de Terre-Neuve-et-Labrador (RDÉE TNL) (Newfoundland and Labrador Francophone Economic Development Network), the Community Economic Development and Employability Corporation (CEDEC), the Canadian Rural Revitalization Foundation (CRRF), Concordia University, the Municipalité Régionale de Comté (MRC) du Golfe St- Laurent, Labrador Solutions, Inc., and the Université du Québec à Rimouski.

Resources emerging from this initiative are available on the CRRF/FCRR website: <http://crrf.ca/trcworkshop/>.



# 2014-2015 key achievements

## **Successful New Relationships, New Realities Conference in Northern BC**

The 26th annual rural conference was a great success! The conference was co-hosted with the Community Development Institute at the University of Northern British Columbia.

## **Two New CRRF/FCRR Lifetime Members**

During the AGM in Summerside the CRRF/FCRR board of directors will recognize two individuals who have demonstrated an outstanding career of contributions to the betterment of rural Canada: Bruno Jean and Bill Reimer. A description of their contributions is listed later in this report.

## **Towards Regional Collaboration Workshop**

The two-day workshop was a great success in northern Québec and Labrador. The workshop was attended by over 40 participants and generated many ideas on how to work across borders.

## **Continued Social Media Presence**

CRRF/FCRR continues to share rural knowledge and news from across the country through our social media platforms. CRRF/FCRR continues to build an active social media presence to share information and facilitate discussions on issues of relevance to rural Canada. You can follow CRRF/FCRR through our social media platforms this past year: Twitter ([@CRRF\\_FCRR](#)), Facebook ([www.facebook.com/crrf.fcrr](http://www.facebook.com/crrf.fcrr)), and LinkedIn.

## **Successful New Researcher Forum at Prince George Conference**

In partnership with the Rural Development Institute (RDI), Brandon University another successful New Researcher Forum was held in Prince George. RDI led the planning and delivery of the Forum. The New Researcher Forum provides an opportunity for new researchers, community development practitioners, and policy makers to create new networks, discuss issues of methods, and build skills and capacities.

## **Beyond 2015 - Building a New Strategic Plan**

Over the past year the board reviewed the current strategic plan and developed a new 5 year plan. With the assistance of Joy Dornian, the board will present the new strategic plan for adoption at the PEI AGM.

## **Successful SSHRC Connection Grant to Support Students**

In partnership with the University of Prince Edward Island, the Foundation was successful in securing funds from the Social Sciences and Humanities Research Council of Canada to facilitate the Summerside conference. The funds will sponsor a number of keynote speakers, travel expenses for community development practitioners, and students.

## CRRF/FCRR E-newsletters

Over the past year the Communications Committee published 10 e-newsletters. Each newsletter highlighted rural and regional development news, new policies and programs, updates on rural research initiatives, and notifications about upcoming rural events. A new initiative of the e-newsletter was to devote an entire issue to profile new researchers conducting rural research. The Communications Committee welcomes submissions of stories and topics - please send an email to [crrf-fcrr@live.com](mailto:crrf-fcrr@live.com).

## Calendar of Rural Events

For the past two years the CRRF/FCRR website has housed a listing of events, conferences, and workshops of interest to rural and regional development. This past year the online calendar of events has benefited from the financial support from the Rural Policy Learning Commons to engage a students to assist in the maintenance. The calendar of events can be accessed at [www.crrf.ca/events](http://www.crrf.ca/events). Additional events can be added by sending the event details to [crrf-fcrr@live.com](mailto:crrf-fcrr@live.com).

## CRRF/FCRR Board Member Receives Distinguished Academic Award

Congratulations to Lars Hallstrom, CRRF/FCRR member and director, who is the recipient of the 2015 Confederation of Alberta Faculty Association Distinguished Academic Award. Lars is being recognized for his research and/or other scholarly, creative or professional activities have made an

outstanding contribution to the wider community beyond the university. On behalf of CRRF/FCRR we would like to congratulate Lars on this distinguished award, one that is well deserved.

## The Next Generation of Rural Policy for Canada

CRRF/FCRR, in partnership with the upcoming Building Community Resilience conference, is hosting a Rural Policy Capacity Building Initiative for graduate students. The program is an opportunity for 20 graduate students to build networks with senior rural scholars and leading rural policy analysts and knowledge mobilizers and to prepare a policy brief for publication in an edited volume on a topic of their choice related to the conference. Through the program, each graduate student will be paired with a senior scholar and a senior policy-maker/knowledge disseminator to provide guidance, enhance networking, and strengthen the policy brief output. The Rural Policy Capacity Building Initiative has provided over \$7,000 in financial support for graduate students to attend the conference and participate in the program. The funds were received through a Connection Grant from the Social Sciences and Humanities Research Council of Canada.

## New Book: Place Peripheral

Place Peripheral examines community and regional development in rural, island, and remote locales from a place-based approach. This is a timely edited collection, addressing themes that are receiving considerable attention in Canada and internationally as local communities, scholars, researchers and public policy analysts strive to better understand





and apply place-based strategies in rural and remote regions. The volume and its contributors examine place-based economic development strategies, recognizing the broader and deeper significance, meanings, and attachments often associated with place and also interrogating such relationships as may exist between sense of place, cultural and social development, and environmental stewardship.

The book is edited by Kelly Vodden (Environmental Policy Institute, Memorial University), Ryan Gibson (Saint Mary's University), and Godfrey Baldacchino (University of PEI). This book emerges from a recent conference co-hosted by CRRF, the North Atlantic Forum, and the Leslie Harris Centre.

## The State of Rural Canada

What are the key issues that are impacting rural communities and regions in Canada? How can all levels of government, as well as residents, work to facilitate rural development throughout the country? What opportunities exist for rural Canada? What policies are needed to enhance rural communities? The State of Rural Canada report examines these questions.

The idea for The State of Rural Canada report came about in order to draw attention to rural challenges and opportunities, and to provide a source of information, and a platform for information sharing. The report contains a cross-Canada overview, as well as chapters on each province and territory. The report ends with a discussion of core themes and a three key recommendations for advancing rural development in Canada. Each chapter has been authored by knowledgeable volunteers, who generously donated their time and knowledge to the report, sharing their perspectives on a variety of core themes affecting rural Canada. Their efforts emulate a tradition of volunteer commitment that is so prominent within rural communities themselves.

On September 17, during the Building Community Resilience conference, The State of Rural Canada report will be officially launched. The full report and executive summary (available in English and French) will be available at [www.sorc.crrf.ca](http://www.sorc.crrf.ca). CRRF is actively promoting the launch of The State of Rural Canada through social media. You can help build momentum towards this initiative by sharing CRRF's social media content about the report and utilizing the Twitter hashtag #sorc2015.



# lifetime members

In 2013, the CRRF/FCRR board of directors created a Lifetime Membership policy to recognize individuals who has demonstrated outstanding contributions to the betterment of rural Canada. The Foundation is honoured to award two distinguished individuals the CRRF/FCRR lifetime membership recognition.

## CRRF/FCRR Lifetime Members

The two lifetime members announced in Summerside join the following group of CRRF/FCRR lifetime members.



**L. Peter Apedaile**



**Ken Donnelly**



**Ray Bollman**



**David Douglas**



**Heather Clemenson**



**Anthony (Tony) Fuller**



# Bruno Jean



Bruno's many contributions speak well of his authority, scholarship, political savvy, and friendly accessibility. Of particular importance for all of us, and indeed rural Canada as a whole has been his ability to keep us connected to the many innovations and developments in policy, programmes, organizations and institutions in Quebec. Whether we see Quebec as something of a model, an interesting experiment or otherwise, this bridging has been critical to the development of CRRF itself as a credible Canada-wide organization, to our many students who have been with us over the last almost three decades, to our own individual research and education, and to rural development policy itself.

Bruno has been sought out by international organizations for his expertise in rural development. Bruno's great accomplishments have been well noted by many institutions across Canada and internationally. This recognition of the contributions of Bruno Jean to rural research, rural policy and indeed the betterment of rural Canada is most deserved.

# William (Bill) Reimer



Since the founding of the Canadian Rural Revitalization Foundation, Bill Reimer has continuously invested his time and his talent to support and to further the objectives of the foundation. Besides serving on the CRRF executive in various capacities, Bill has been, and continues to be, the CRRF focal point for rural research. Bill was the lead for the New Rural Economy project which, at the time, was the largest-ever research project that was funded by the Social Sciences and Humanities Research Council. He has a genius for grantsmanship, second only to the inspiration he has conveyed to his many grad students and fellow researchers. His students have not only shown great loyalty to him, but to the CRRF mission.

In guiding CRRF in the pursuit of CRRF objectives, Bill has championed the integration of rural citizens, policy analysts, practitioners and researchers. For stalwart energy in promoting CRRF and in promoting rural research, we are delighted to nominate Bill Reimer for the CRRF Lifetime Membership award.

# join the foundation as a member

Now in its third decade, CRRF/FCRR is a proven rural resource, dedicated to active collaboration, undertaking, facilitating and advocating research for the ongoing development of Canada's rural communities and environments. As an informal, volunteer run organization dedicated to the welfare of rural Canada it provides a host of benefits to an expanding membership.

Being a member of this Canada-wide and international collaborative network brings with it a variety of benefits, which include:

- direct access to Canada's leading researchers, practitioners, policy advisers, professional consultants, community activists, and many others.
- participation in our Annual Conference, exciting, stimulating and informative three-day events.
- access to the New Researchers Forum for tips, coaching, contacts, mentors, and practical information on all aspects of rural development research (e.g. community surveys, workshop facilitation, Census data).
- access to knowledge about rural-relevant information and data for analysis or education purposes.
- contact with international rural development networks in, for example, the European Union, Australia, Japan, the United States, and elsewhere.
- direct access to a variety of published research (e.g. books, reports, papers, surveys).
- opportunities to hear leading authorities on rural development from around the world, at our Annual Conferences and occasional Think Tanks and collaborative Research Workshops.
- opportunities to collaborate on a variety of rural research Proposals which generate short, medium and longer term projects.
- access to our electronic E-newsletter, an informative, current and researcher/ practitioner focused quarterly publication.
- opportunities to interact with a variety of organizations active in rural development

CRRF/FCRR offers both a one-year membership (\$30) and a five-year membership (\$100). Membership runs from January – December. Become a member today by visiting [www.crrf.ca/?page\\_id=31](http://www.crrf.ca/?page_id=31).



keep up to date  
with CRRF/FCRR



[www.crrf.ca](http://www.crrf.ca)



[@CRRF\\_FCRR](https://twitter.com/CRRF_FCRR)



[crrf.fcrr](https://www.facebook.com/crrf.fcrr)



Canadian-Rural-Revitalization-  
Foundation-Fondation-4104656

# thank you

The work of the Foundation is completed through the generous in-kind contributions of people from across the country. We would like to acknowledge these individuals who have contributed to their time to our activities.

**Communications Committee and Contributors:** Joshua Barrett, Ryan Gibson, Lori Gould, Heather Hall, Logan Horrocks, Alberta Centre for Sustainable Rural Communities, Centre de recherche sur le développement territorial, Community Development Institute, Columbia Basin Rural Development, International Centre for Northern Governance and Development, Leslie Harris Centre for Regional Policy and Development, Rural Development Institute, Solidarité rurale du Québec

**2014 Conference Planning Committee:** David Connell, Lynn Florey, Marc Imus, Lisa Krebs, Sean Markey, Terri MacDonald, Elissa Meiklem, Marleen Morris, Vince Prince, Steve Raper, Bill Reimer, Laura Ryser, Susan Stearns, Gary Wilson.

**2015 Conference Planning Committee:** Godfrey Baldacchino, Laurie Brinklow, Sheila Downer, David Douglas, Ryan Gibson, Gudrun Helgadóttir, Fred Horne, Andrew Lush, Irene Novaczek, Emily Thomas.

**2016 Conference Planning Committee:** Ryan Gibson, Heather Hall, Wayne Kelly, Al Lauzon.

**Strategic Planning Committee:** Lars Hallstrom, Al Lauzon, David Douglas, Rob Greenwood

**Policy and Advocacy Committee:** Robert Annis, Heather Hall, Sean Markey

**Towards Regional Collaboration Workshop Planning Committee:** Christophe Caron, Mike Clair, Sheila Downer, Vicki Driscoll, Ryan Gibson, Bruno Jean, Bill Reimer, Allen Richards, Lana Shattler.

**State of Rural Canada Contributors:** Sean Markey, Sarah-Patricia Breen, Al Lauzon, Ryan Gibson, Laura Ryser, Ruth Mealy, Greg Halseth, Lars Hallstrom, Jennifer Stonechild, Willssa Reist, Bill Ashton, Stephanie LaBelle, Wanda Wuttunee, Heather Hall, Rose Olfert, Norman Ragetlie, Wayne Caldwell, David Douglas, Laurie Guimond, Bruno Jean, Thomas Beckley, James Randall, Don Desserud, Katharine MacDonald, Joanne Fitzgibbon, Nina Nunez, Alvin Simms, Robert Greenwood, Ken Coates, Amanda Graham, Pertice Moffitt, Ashley, Mercer, Chris Southcott.



# looking forward to 2015-2016

## The State of Rural Canada

The CRRF/FCRR Board of Directors is committed to maintaining the momentum developed through The State of Rural Canada 2015. CRRF/FCRR will be exploring opportunities to move recommendations into action and engage a wider audience.

## 2016 Conference with RPLC

The 2015 edition of the CRRF/FCRR fall rural conference will take place in partnership with the Rural Policy Learning Commons (RPLC). The conference will take place in central Canada. Details of the conference theme, location, and dates will be announced in the late fall 2015 on the CRRF/FCRR and RPLC-CAPR websites.

## New Rural Policies for a New Rural Canada

Over the next four to six months, CRRF/FCRR will be working with 20 graduate students and over 40 mentors to generate nearly two dozen new rural policy ideas. The ideas will be published as an edited book in 2016. Watch the CRRF/FCRR website for more details!



Canadian Rural Revitalization Foundation  
Fondation canadienne pour la revitalisation rurale



[www.crrf.ca](http://www.crrf.ca)