



2013-2014 ANNUAL REPORT

Canadian Rural Revitalization Foundation
Fondation canadienne pour la revitalisation rurale





www.crrf.ca

about the foundation

The Canadian Rural Revitalization Foundation/Fondation canadienne pour la revitalisation rurale (CRRF/FCRR) was established in 1989 to contribute to the revitalization and sustainability of rural Canada through collaborative research for rural leaders in the community, private sector, and in all levels of government.

CRRF/FCRR works to create credible insights and to improve our understanding of issues and opportunities that are of common interest to rural residents across Canada. Knowledge and better understanding are the fundamental pillars for the welfare of rural communities and environments.

CRRF/FCRR is an organization comprised of members from across Canada, with diverse international links, representing rural leaders, rural organizations, development practitioners, government policy makers, researchers, students, and other stakeholders interested in the future of rural Canada. The Foundation explores a diversity of issues, including rural health and social provision, local and regional economic development, local government and community governance, education, organization development, environmental management and stewardship, and many others facets of life and livelihood in rural Canada. Each year CRRF/FCRR co-hosts a national confer-

ence to share lessons learned, research findings, and discuss key rural issues. In addition to the national conference, CRRF hosts and participates in workshops, forums, and symposia to advance rural issues in Canada.

Originally known as the Agricultural and Rural Restructuring Group (ARRG), CRRF/FCRR is a national nonprofit society chartered in the Province of Alberta (#50509014) and a federally registered charity (#0990655-59).

Core Values

CRRF/FCRR carries out its mission without favour or prejudice by political interest.

CRRF/FCRR respects and serves inclusively the interests of all segments of rural society, within communities, between metro-adjacent and remote places, and across the forestry, fishing, mining, agriculture, energy, manufacturing and services sectors.

CRRF/FCRR is open, transparent and accountable.

CRRF/FCRR seeks to broaden the common ground between rural and urban Canadians.

president's message

It is my pleasure to present the 2013-2014 Annual Report of the Canadian Rural Revitalization Foundation/Fondation canadienne pour la revitalisation rurale (CRRF/FCRR). Over past twelve months the Foundation has been active in contributing to lead rural research, sharing knowledge among stakeholders, and strengthening our strategic directions and policies.

This report highlights the many achievements of the Foundation since our 2013 Annual General Meeting. We started the year with a fantastic 25th anniversary conference in Thunder Bay, Ontario. Our conference co-hosts at Lakehead University, the Northwestern Ontario Municipal Association, and the Nishnawbe-Aski Nation organized a tremendous event.

Over the past year we have continued to be an active supporter of rural research throughout Canada. We have partnered as a collaborator on three key research initiatives and are serving as a partner on two new research endeavours. Details on this research initiatives are outlined further in the report and on our website. The Foundation also took the opportunity to review and reflect on our 2010-2015 strategic plan. Over the coming year the new board will be charged with crafting a new strategic plan and I encourage everyone to become engaged in this process.

The achievements of the Foundation this past year would not have been possible without the support and dedication of our volunteers. The Foundation operates without paid staff members – a testament to the strength of our volunteers, partners, and stakeholders. I would like to thank each of the individuals and organizations that have contributed their time and energy to the Foundation and our activities. I would also like to extend my gratitude to my colleagues on the board of directors. The achievements of the Foundation are a result of their commitment to rural and regional development.

Sincerely,

Ryan Gibson.



board of directors



Ryan Gibson
President
Halifax, Nova Scotia



Al Lauzon
Guelph, Ontario



Heather Hall
Secretary
Saskatoon, Saskatchewan



Terri MacDonald
Castlegar, British Columbia



Bill Ashton
Treasurer
Brandon, Manitoba



Sean Markey
Vancouver, British Columbia



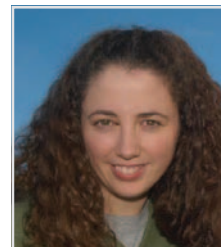
Robert C. Annis
Past President
Cobble Hill, British Columbia



Chris Southcott
Thunder Bay, Ontario



Matthew Brett
Winnipeg, Manitoba



Laura Ryser
Prince George, British Columbia



Lars Hallstrom
Camrose, Alberta

accountability and governance

bylaws

CRRF/FCRR adopted the current bylaws at the 2011 Annual General Meeting in St John's, Newfoundland. The Foundation is governed by an elected board of directors, each elected for a two-year term at the Annual General Meeting. A copy of the current bylaws can be found at www.crrf.ca/wp-content/uploads/2011/11/CRRF-Constitution-adopted-at-2011-AGM.pdf.

board meeting minutes

The minutes from each CRRF/FCRR board meeting are posted to our website shortly after being approved by the board. Copies of the board minutes, starting from January 2010, can be found at www.crrf.ca/?page_id=29.

audited financial statements

Each year CRRF/FCRR submits the financial books, accounts, and records of the Secretary and Treasurer to an independent auditor. The most recent audit was conducted by Harris Ryan Chartered Accounts, based in St John's, Newfoundland. A copy of the 2013 auditor's report can be found at www.crrf.ca/wp-content/uploads/2014/08/CRRF-Harris-Ryan-2013-Financial-Report.pdf. Previous audit financial statements can also be found on the CRRF/FCRR website.

annual general meeting documents

The agendas and minutes from previous Annual General Meetings are posted to the CRRF/FCRR website at www.crrf.ca/?page_id=62. The Foundation circulates information about upcoming AGMs at least 20 days in advance of the meeting, in accordance to our bylaws. Information is circulated to members via our e-newsletters, social media platforms, and our website.

charity compliance

As a federally registered charity CRRF/FCRR annually submits the T3010 form to the Canadian Revenue Agency. Evidence of these annual submissions can be found at www.cra-arc.gc.ca/chrts-gvng/lstngs/menu-eng.html.

research activities

Over the past year, CRRF/FCRR has been actively involved in a number of research initiatives of interest to rural audiences. Three of these research initiatives are illustrated below.

Canadian Regional Development: A Critical Review of Theory, Practice and Potentials

Lead: Kelly Vodden (Grenfell Campus, Memorial University)

This multi-year project is investigating how Canadian regional development has evolved over the past two decades and the degree to which Canadian regional development systems have incorporated New Regionalism into their policy and practice. This initiative is working with five regions: Eastern Ontario, Kittiwake (Newfoundland), Kootenay (BC), Rimouski-Neigette (Québec), and the Northern Peninsula (Newfoundland). For further information visit <http://cdnregdev.ruralresilience.ca>.

Rural Policy Learning Commons

Leads: Bill Reimer and Bill Ashton (Brandon University)

The Rural Policy Learning Commons is a 7-year Partnership project established in 2014 to enhance Canadian prosperity by: (i) identifying and analyzing policy options relevant to rural and northern places, (ii) evaluating these options in the context of national and international policy innovations, and (iii) building leadership capacity among rural and northern researchers, policy-makers, and practitioners. Further information on the Rural Policy Learning Commons can be found at <http://rplc-capr.ca>.

The Influence of Lines and Boundaries on Collaboration

Lead: Ryan Gibson (Saint Mary's University)

Regions are becoming increasingly important for planning, sustainability, and social development. Throughout Canada, multi-community strategies are being employed to issues far ranging, such as to address economic development opportunities to the formation of hockey teams. What happens when a provincial boundary cuts across the region? What are the implications of this 'line' on regional cooperation and collaboration?

Pathways to Prosperity

Lead: Victoria Esses (University of Western Ontario)

This national initiative focuses on fostering welcoming communities that promote economic, social, and civic integration of immigrants and minorities in Canada. Using academic scholarship and community expertise the research initiative is conducting primary research across the country. This initiative engages researchers from over 50 universities, all levels of government, and local/regional actors. For further information visit <http://p2pcanada.ca>.

supporting research initiatives

In addition to being engaged in research CRRF/FCRR is an active participant in a number of research proposals currently being adjudicated. Funding decisions regarding each proposal is anticipated in 2014.

Human Development in the Provincial North

CRRF/FCRR is a collaborator on a research proposal to the Social Sciences and Humanities Research Council of Canada (SSHRC) led by Ken Coates at the International Centre for Northern Governance and Development, University of Saskatchewan. The proposed four-year project will construct an assessment framework for understanding development in the northern region of Saskatchewan.

Place, Periphery, and Philanthropy

CRRF/FCRR is also a collaborator on a research proposal to SSHRC led by Ryan Gibson at Saint Mary's University to examine the intersection of philanthropy and regional development in rural and northern communities throughout Canada. The proposal has been submitted to the Social Sciences and Humanities Research Council of Canada.



rural canada: ready to grow



Rural Canada is in a constant state of change. In recent years, many rural areas in more northern and remote regions of the country have experienced changes in their regional economies due to various kinds of resource development. These developments have ushered in new opportunities for growth, while also reigniting questions related to regional development, resource management, governance and co-governance of resources at local/regional levels and with Aboriginal (First Nations, Métis and Inuit) peoples.

Rural Canada is ready to grow, but the following questions are critical to how we move forward:

- How do we ensure that some of the benefits of the natural resource industries remain where the resource is extracted?
- What policies and practices need to be in place to ensure that there is a real and lasting positive legacy?
- What governance structures will best ensure positive outcomes for those residing in these regions?
- What are the social ramifications of resource development and how can we mitigate those that are negative and build strong, resilience communities?

The *Rural Canada: Ready to Grow* conference brought together over a hundred representatives from rural and Aboriginal communities, municipalities, development organizations, the provincial government, the federal government, and private businesses as well as students and researchers. *Rural Canada: Ready to Grow* facilitated a diverse and lively conversation among community leaders, researchers, professional practitioners, government, and private industry about pressing questions facing rural Canada. Conference participants from across the country came to Thunder Bay to share stories of rural and regional development. Electronic copies of the presentations delivered at the conference can be found at www.crrf.ca/?page_id=2076.

The conference was co-hosted by the School of Outdoor Recreation, Parks, and Tourism at Lakehead University, Nishnawbe Aski Nation, and the Northwestern Ontario Municipal Association.



towards regional collaboration workshop

How do northern and remote community remain sustainable? What are the recent trends in regional collaboration? How can communities, universities, government, NGOs, and businesses collaborate to enhance regional development? These are the questions that will be explored at the Towards Regional Collaboration event in Blanc Sablon, QC and L'Anse au Clair, NL on October 15-16, 2014.

The challenges of sustainability and revitalization are multiplied where rural and remote regions are bisected by some type of formal boundary, such as a provincial border. This is surprisingly quite common: Quebec Lower North Shore and Labrador Straits; Labrador West and Fermont; Northern New Brunswick and the Gaspé Peninsula; the James Bay region (Manitoba, Ontario and Quebec); etc. How is public policy to be coordinated when responsibility is divided among two or three jurisdictions? How can expensive public services be shared? How can citizens build upon their strong cultural links and develop stronger economic partnerships?

This is the situation which the proposed workshop is meant to address. The workshop will hear from renowned academic researchers, local stakeholders and visiting practitioners. It will also include specific initiatives designed to foster collaboration among university students and faculty from a variety of disciplines with local citizens in a search for tractable socio-technical innovations that will address local challenges. The outcome of the workshop will be a report that captures the presentations and the discussions, and that makes evidence-based recommendations on how to build on the strengths and address the weaknesses. A collateral outcome of the workshop will see continuing development of innovative proposals over the months following the workshop, as students develop them as part of their course work, collaborating virtually with champions in the communities to validate their proposed solutions.

The Towards Regional Collaboration Workshop is being co-hosted by CRRF/FCRR, Community Economic Development and Employability Corporation, Centre for Engineering in Society (Concordia University), Leslie Harris Centre (Memorial University), Municipalité Régionale de Comté du Golfe St-Laurent, School of Extended Learning (Concordia University), SmartLabrador, Réseau de Développement Économique et d'Employabilité de Terre-Neuve et du Labrador, and Université du Québec à Rimouski.

More information on the Towards Regional Collaboration Workshop can be found at a www.crrf.ca/?page_id=3201.



2013-2014 key achievements

Successful 25th Annual Conference in Thunder Bay

The 25th annual rural conference was a great success. **Rural Canada: Ready to Grow** attracted participants from across Canada and internationally to Thunder Bay, Ontario. Highlights from conference presentations and discussion can be found at www.crrf.ca. The conference was co-hosted with Lakehead University, the Northwestern Ontario Municipal Association, and the Nishnawbe Aski Nation.

New CRRF/FCRR Lifetime Members

In 2013, the CRRF/FCRR board of directors created a policy to recognize individuals who have demonstrated an outstanding career of contributions to the betterment of rural Canada. In Prince George two new members were bestowed the lifetime member: David Douglas and Anthony Fuller.

Towards Regional Collaboration Workshop

Over the past year a committee of dedicated organizations have been organizing the upcoming Towards Regional Collaboration workshop. The workshop is being organized by Community Economic Development and Employability Corporation, CRRF, Centre for Engineering in Society (Concordia University), Leslie Harris Centre (Memorial University), Municipalité Régionale de Comté du Golfe St-Laurent, School of Extended Learning (Concordia University), Smart-Labrador, Réseau de Développement Économique et d'Employabilité de Terre-Neuve et du Labrador, and Université du Québec à Rimouski. Watch the CRRF website for information and updates emerging from the workshop.

New Working Groups of the Board

The board created two new committees to advance the Foundation's mandate: Strategic Partners and Network Working Group and Policy Advocacy Working Group. The Strategic Partners and Network Working Group is responsible for enhancing our existing partnerships and developing new relationships. The Working Group will also lead discussions on the next strategic plan. The Policy and Advocacy Working Group will organize avenues for organizing policy discussions and explore the development of CRRF/FCRR policy papers. If you would like to become engaged in either committee please contact crrf-fcrr@live.com.

Working Group on Exploring Charitable Activities

A working group was created to explore how CRRF/FCRR could maximize our charitable registration to further the mandate of the organization. The working group has collected information from previous endowment campaigns and is exploring potential options. The working group's work will continue over the fall 2014 with options presented to the CRRF/FCRR board for consideration and adoption.

Continued Social Media Presence

A key achievement of the Foundation over the past year has been sharing rural knowledge and news from across the country. CRRF/FCRR continues to build an active social media presence to share information and facilitate discussions on issues of relevance to rural Canada. You can follow CRRF/FCRR through our social media platforms this past year: Twitter ([@CRRF_FCRR](https://twitter.com/CRRF_FCRR)), Facebook (www.facebook.com/crrf.fcrr), and LinkedIn.

MOU with RDI on New Researcher Forum

In the winter 2014 the Foundation signed an memorandum of understanding with the Rural Development Institute at Brandon University regarding the New Researcher Forum. Through this partnership, RDI will lead the planning and delivery of the Forum in 2014-2016. The New Researcher Forum provides an opportunity for new researchers, community development practitioners, and policy makers to create new networks, discuss issues of methods, and build skills and capacities. The board of directors looks forward to enhancing the relationship with RDI on the New Researcher Forum!

Canada's new Anti-Spam Legislation

In the winter 2014 the board of directors reviewed the Foundation's current online communication practices to ensure they correlated with the federal government's recent Anti-Spam Legislation.

2010-2015 Strategic Plan Review

The board of directors conducted a review of the 2010-2015 strategic plan. Over the past three years the Foundation has achieved many plan objectives. To view a update summary on the 2010-2015 strategic plan visit www.crrf.ca/wp-content/uploads/2014/09/ReflectionsStrategicPlan.pdf. The board continues to utilize the strategic plan to identify priorities and activities.

Beyond 2015 - Building a New Strategic Plan

Over the coming year the board will prepare a new strategic plan, 2015-2020. It is anticipated this new plan will be presented for adoption at the 2015 CRRF/FCRR AGM in Summerside, PEI. The board welcomes contributions from members and supporters on key priorities, activities, and partnerships for the next five year period. Comments can be sent to crrf-fcrr@live.com.

Student and Practitioner Travel Funding Support from OMAF/MRA

The Foundation was successful in securing funds to offset the expenses of attending the Thunder Bay conference for community development practitioners and students. Through the generous contribution from Ontario Ministry of Agriculture and Food and the Minsitry of Rural Affairs CRRF was able to provide 11 students and community development practitioners with funds to attend the conference.

CRRF/FCRR E-newsletters

Over the past year the Communications Committee published 12 e-newsletters. Each newsletter highlighted rural and regional development news, new policies and programs, updates on rural research initiatives, and notifications about upcoming rural events. The Communications Committee welcomes submissions of stories and topics - please send an email to crrf-fcrr@live.com.



Planning Committee for 2015 Conference in Summerside

The 2015 fall conference will take place in Summerside, Prince Edward Island. The conference will be co-hosted with the Institute of Island Studies (UPEI) and the North Atlantic Forum. Further details about the conference can be found at <http://projects.upei.ca/iis/naf-2015/>.

Renewed Society Registration

The board of directors renewed our registration as a nonprofit society in the province of Alberta in the summer 2014.

Bylaw Review

The board conducted a complete review of the Foundation's bylaws, adopted in 2011. The review was initiated to address minor inconsistencies. The revisions to the bylaws will be presented at the AGM for adoption. If accepted, the new bylaws will take place in October 2014.

2013 New Researcher Forum

During the Rural Canada: Ready to Grow conference in Thunder Bay the Foundation co-hosted the New Researcher Forum with the Rural Development Institute at Brandon University. The New Researcher Forum provided an opportunity for new researchers and community development practitioners to discuss rural development methodologies and challenges of rural research.

Calendar of Rural Events

For the past year the CRRF/FCRR website has housed a listing of events, conferences, and workshops of interest to rural and regional development. The calendar of events can be accessed at www.crrf.ca/?post_type=tribe_events. Additional events can be added by sending the event details to crrf-fcrr@live.com.



lifetime members

In 2013, the CRRF/FCRR board of directors created a Lifetime Membership policy to recognize individuals who has demonstrated outstanding contributions to the betterment of rural Canada. The Foundation is honoured to award two distinguished individuals the CRRF/FCRR lifetime membership recognition.



**David
Douglas**



**Anthony
(Tony)
Fuller**

CRRF/FCRR Lifetime Members

The two lifetime members announced in Prince George join the following group of CRRF/FCRR lifetime members.



L. Peter Apedaile



Heather Clemenson



Ray Bollman



Ken Donnelly

David Douglas

David has been a long-term supporter of the Canadian Rural Revitalization Foundation and avid rural researcher.

David has served as an architect to many of the Foundation's key initiatives and strategies, generated substantial knowledge on rural policy and planning issues as a preeminent scholar, facilitated connections among rural actors across Canada and internationally, and served as a mentor to many of this country's emerging scholars.

David has been a faculty member of the University of Guelph, serving as the Director of the former School of Rural Planning and Development from 1985-92. David is actively involved in a number of research projects and community outreach, and instructs several courses within Rural Planning and Development.

David has served as a Rural Development Expert Advisor in Ukraine, a co-investigator on a major project on "new regionalism" in Canada, editor and author of Rural Planning and Development in Canada (Nelson, 2010), and is a Member of the OECD LEED Forum on Partnerships and Local Governance.

CRRF/FCRR is grateful for the significant direction and dedication David has provided over years.

Anthony (Tony) Fuller

Tony Fuller was a sparkplug that initiated the Agriculture and Rural Restructuring Group (ARRG), the forerunner of the Canadian Rural Revitalization Foundation (CRRF/FCRR).

In the 1980s, Tony was responsible for obtaining a series of operating grants from Agriculture and Agri-Food Canada. Along with other colleagues across Canada he organized a meeting of interested researchers from universities across Canada in Regina in 1987. This led to the first ARRG conference in Saskatoon in 1989.

Tony's commitment to CRRF/FCRR has included serving on the ARRG board of directors and then CRRF/FCRR for many years. He helped to establish the tradition of annual conferences in rural centres across Canada to inform the work of local leaders through discourse with national and international researchers, government policy analysts and rural development practitioners.

Tony's career in rural development teaching and research spanned 35 years at the University of Guelph. Tony provided visionary and intensive support of CRRF/FCRR in its formative years and continues to contribute to rural research.

join the foundation as a member

Now in its third decade, CRRF/FCRR is a proven rural resource, dedicated to active collaboration, undertaking, facilitating and advocating research for the ongoing development of Canada's rural communities and environments. As an informal, volunteer run organization dedicated to the welfare of rural Canada it provides a host of benefits to an expanding membership.

Being a member of this Canada-wide and international collaborative network brings with it a variety of benefits, which include:

- direct access to Canada's leading researchers, practitioners, policy advisers, professional consultants, community activists, and many others.
- participation in our Annual Conference, exciting, stimulating and informative three-day events.
- access to the New Researchers Forum for tips, coaching, contacts, mentors, and practical information on all aspects of rural development research (e.g. community surveys, workshop facilitation, Census data).
- access to knowledge about rural-relevant information and data for analysis or education purposes.
- contact with international rural development networks in, for example, the European Union, Australia, Japan, the United States, and elsewhere.
- direct access to a variety of published research (e.g. books, reports, papers, surveys).
- opportunities to hear leading authorities on rural development from around the world, at our Annual Conferences and occasional Think Tanks and collaborative Research Workshops.
- opportunities to collaborate on a variety of rural research Proposals which generate short, medium and longer term projects.
- access to our electronic E-newsletter, an informative, current and researcher/ practitioner focused quarterly publication.
- opportunities to interact with a variety of organizations active in rural development

CRRF/FCRR offers both a one-year membership (\$30) and a five-year membership (\$100). Membership runs from January – December. Become a member today by visiting www.crrf.ca/?page_id=31.

keep up to date
with CRRF/FCRR



www.crrf.ca



[@CRRF_FCRR](https://twitter.com/CRRF_FCRR)



[crrf.fcrr](https://www.facebook.com/crrf.fcrr)



Canadian-Rural-Revitalization-
Foundation-Fondation-4104656

thank you

The work of the Foundation is completed through the generous in-kind contributions of people from across the country. We would like to acknowledge these individuals who have contributed to their time to our activities.

Communications Committee and Contributors: Joshua Barrett, Juanita Bascu, Matthew Brett, Devin Kay, Ryan Gibson, Lori Gould, Heather Hall, Rita Juba, Devin Keay, Sarah Minnes, Marleen Morris, Rural Development Institute

2014 Conference Planning Committee: David Connell, Lynn Florey, Marc Imus, Lisa Krebs, Sean Markey, Terri MacDonald, Elissa Meiklem, Marleen Morris, Vince Prince, Steve Raper, Bill Reimer, Laura Ryser, Susan Stearns, Gary Wilson.

2013 Conference Planning Committee: Iain Angus, Kristina Baccar, Eric Cline, David Douglas, Ryan Gibson, Heather Hall, Rhonda Koster, Harvey Lemelin, Kristen Oliver, Jess McLaughlin, Alan Sparkes.

Strategic Planning Committee: Lars Hallstrom, Al Lauzon, David Douglas, Rob Greenwood

Policy and Advocacy Committee: Robert Annis, Heather Hall, Sean Markey

Towards Regional Collaboration Workshop Planning Committee: Christophe Caron, Mike Clair, Sheila Downer, Vicki Driscoll, Ryan Gibson, Bruno Jean, Bill Reimer, Allen Richards, Lana Shattler.

2015 Conference Planning Committee: Godfrey Baldacchino, Andrea Bird, Laurie Brinklow, Sheila Downer, David Douglas, Ryan Gibson, Gudrún Helgadóttir, Fred Horne, Edward MacDonald, Irene Novaczek, Emily Thomas.



looking forward to 2014-2015

Towards Regional Collaboration Workshop

From October 15-16, 2014, residents, researchers, students, and government policy-makers will gather in the Quebec Lower North Shore and Labrador Straits Region to discuss regional collaboration opportunities. The workshop will be an enhancing the understanding of cross-border collaboration and explore potential strategies for enhancing collaboration in the region.

2015 Conference heads to PEI

The 2015 edition of the CRRF/FCRR fall rural conference will in Summerside, Prince Edward Island. CRRF/FCRR will partner with the Institute of Island Studies at the University of Prince Edward Island and the North Atlantic Forum to co-host the conference. The conference's theme is Building Resilient Communities: Innovation, Culture, and Governance in Place. The conference will examine opportunities for sustainable living that are more likely to emerge from small and peripheral communities.

Participation in New Research Initiatives

Over the next year CRRF/FCRR will be active in a number of research initiatives addressing key issues for rural and northern communities. Watch the CRRF/FCRR website for regular updates on these initiatives - www.crrf.ca.

Canadian Rural Revitalization Foundation
Fondation canadienne pour la revitalisation rurale



www.crrf.ca