

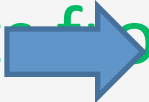
# Identity Re-engineering: A Political Economy of Rebounding Peripheries

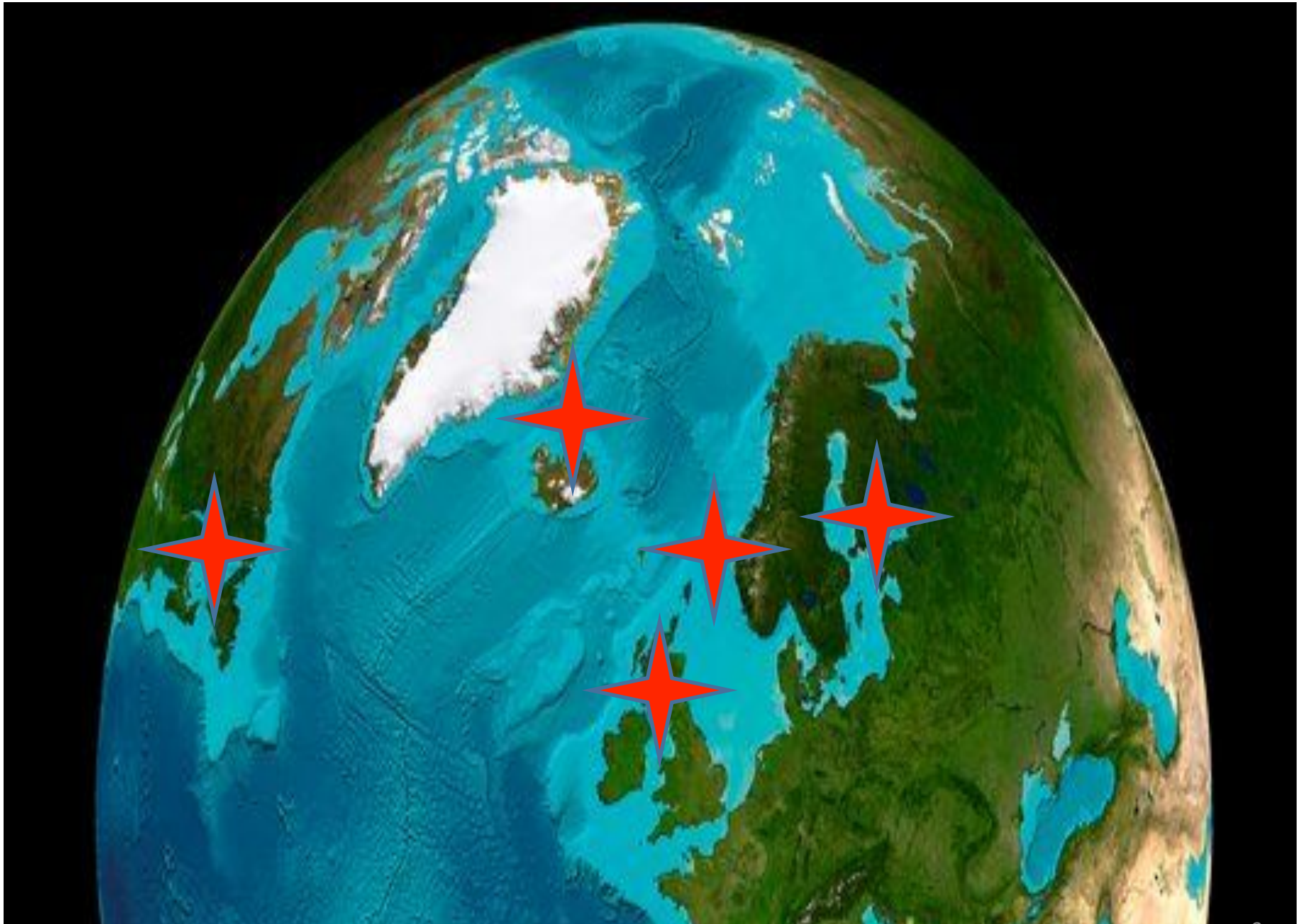
Godfrey Baldacchino



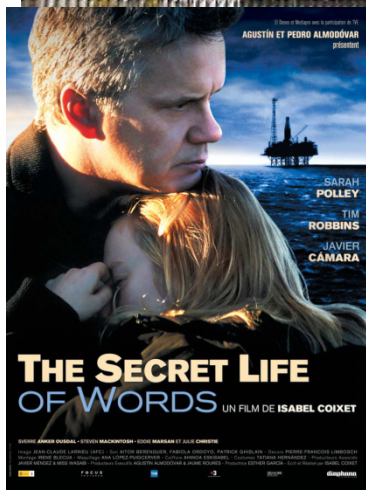
**UPEI** UNIVERSITY  
of Prince Edward  
ISLAND

# Living with 'Augmented Relationality' (Thrift, 2005)

- Eco-Locale Friendly Tourism
- High-Value, Branded Products for Niche Markets
- Resurrect/Replace BIG Private Employer
- Micro-finance
- Support new/current small business
- Encourage entrepreneurship
- Rent  from Second Home/Seasonal Residents
- 'Aid'      Remittances/Barter/Informal Economy



# Belfast, Northern Ireland





# Slemon Park, Prince Edward Island



# Eyjafjörður, North Iceland



SAMHERJI HF





# Unst, Shetland Islands



Stephen Spence



# Kökar, Åland Islands, Finland

**Satu Kiljunen**



**Jens + Marina - Architects**



# Reflecting on Assets of Small Remote Communities

- Strong bonding (not bridging) social capital
- Synergies from higher education institution
- No industrial brown belt: clean and pristine?
- Reinvented and retooled traditions
- An inevitable dominant player
- Connectivities – transport and ICTs
- Partake in trajectories of mobilities